

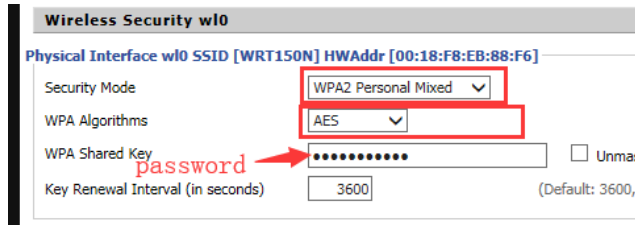
1. Why my mmdvm WIFI connection is malfunction.

Check your "wpa_supplicant.conf" file is accordance with your local WIFI setting.

This file can be generated at this website:

http://www.pistar.uk/wifi_builder.php

Here is an example setting in my router under DD-WRT system.



And make sure DHCP is enabled in your router (this is default in most case), which will distribute a dynamic IP for your MMDVM. **You will need this IP to enter the WEB GUI.**

2. Why my OLED is not working.

First, make sure your mmdvm WIFI connection is OK. (A Client named pi-star will show in your router LAN interface)

Then, check your WEB GUI configuration, whether OLED is selected. If NOT, choose it and repower the MMDVM. After 1-2 minutes waiting, OLED will be lighten.



Brief for short, there are 2 points you need to confirm:

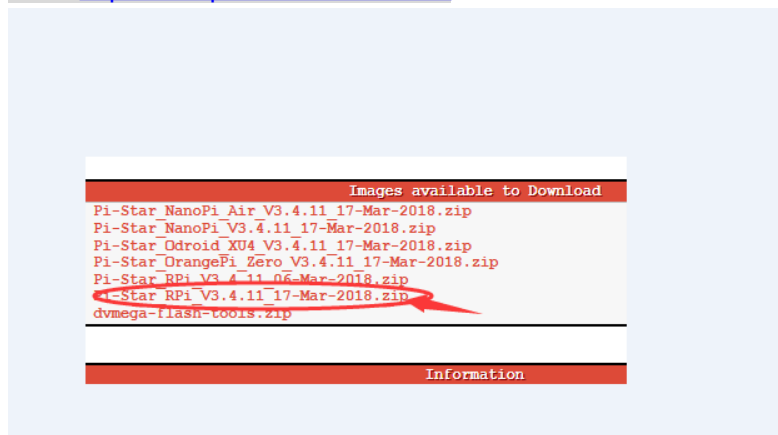
1. your WIFI is configured SSID/PASSWORD rightly; MMDVM connected and get an IP address.
2. Do you select the OLED in WEB GUI

OLED have a rare rate of broken, or wiring error. We do this basic OLED test at every package sending.

3. IMG update:

Download new IMG file , and write the IMG to the SD card again

Link: <http://www.pistar.uk/downloads/>



pls use this software:

<https://sourceforge.net/projects/win32diskimager/>

4. **YSF ,DMR D-STAR** Setting :

=====DMR Setting=====

1. Your radio must support real double time slot.(DM-5R have 2 types, one is OK, but another is fake support double time slot). Time slot = 2 is default setting in MMDVM, and your radio must set accordingly.

2. Your Color code must set accordance with your radio. Such as CC = 1 in default of MMDVM setting

Short in all, Time slot and Color code setting should be the same in your radio.

hostname	kernel	filesystem	CPU usage	CPU Temp
pi-star	4.9.35+	Pi Zero W Rev 1.1 (512MB)	2.07 / 0.65 / 0.31	41.7°C / 107.1°F

Control Software

Setting	Value
Controller Software:	<input type="radio"/> DStarRepeater <input checked="" type="radio"/> MMDVMHost (4v-Mega Minimum Firmware 3.07 Required)
Controller Mode:	<input checked="" type="radio"/> Simplex Node <input type="radio"/> Duplex Repeater (or Half-Duplex on Hotspots)
<input type="button" value="Apply Changes"/>	

MMDVMHost Configuration

Setting	Value
DMR Mode:	<input checked="" type="checkbox"/> RF Hangtime: 20 Net Hangtime: 20
D-Star Mode:	<input type="checkbox"/> RF Hangtime: 20 Net Hangtime: 20
YSF Mode:	<input type="checkbox"/> RF Hangtime: 20 Net Hangtime: 20
P25 Mode:	<input type="checkbox"/> RF Hangtime: 20 Net Hangtime: 20
NXDN Mode:	<input type="checkbox"/> RF Hangtime: 20 Net Hangtime: 20
YSF2DMR:	<input type="checkbox"/>
MMDVM Display Type:	OLED Port: /dev/ttyAMA0 Nextion Layout: G4KLX
<input type="button" value="Apply Changes"/>	

General Configuration

Setting	Value
Hostname:	pi-star Do not add suffixes such as .local
Node Callsign:	BG5TOX <i>your DMR ID must legal applied. and call sign and DMR ID</i>
CCS7/DMR ID:	1234567 <i>should be set the same in your radio. ***IMPORTANT***</i>
Radio Frequency:	431.075.000 MHz
Latitude:	50.000 degrees (positive value for North, negative for South)
Longitude:	0.000 degrees (positive value for East, negative for West)
Town:	Fuzhou city
Country:	CHINA
URL:	http://www.qrz.com/db/BG5ROJ <input checked="" type="radio"/> Auto <input type="radio"/> Manual
Radio/Modem Type:	STM32-DVM / MMDVM_HS - Raspberry Pi Hat (GPIO)
Node Type:	<input type="radio"/> Private <input checked="" type="radio"/> Public
System Time Zone:	Asia/Shanghai
Dashboard Language:	english_uk
<input type="button" value="Apply Changes"/>	

Choose the host of your location, here is only an example

DMR Configuration

Setting	Value
DMR Master:	DMRGateway
BrandMeister Master:	BM_Ukraine_2551
BrandMeister Network:	Repeater Information Edit Repeater (BrandMeister Selfcare)
DMR+ Master:	DMR+_773RADIOGROUP_TEST
DMR+ Network:	Options=
XLX Master:	XLX_950

=====YSF Setting=====

Hostname	Kernel	Firmware	CPU Load	CPU Temp
pi-star	4.9.35+	Pi Zero W Rev 1.1 (512MB)	1.75 / 0.64 / 0.23	37.4°C / 99.3°F

Control Software

Setting	Value
Controller Software:	<input type="radio"/> DStarRepeater <input checked="" type="radio"/> MMDVMHost (DV-Mega Minimum Firmware 3.07 Required)
Controller Mode:	<input checked="" type="radio"/> Simplex Node <input type="radio"/> Duplex Repeater (or Half-Duplex on Hotspots)

YSF Setting

MMDVMHost Configuration

Setting	Value
DMR Mode:	<input type="checkbox"/> RF Hangtime: 20 Net Hangtime: 20
D-Star Mode:	<input type="checkbox"/> RF Hangtime: 20 Net Hangtime: 20
YSF Mode:	<input checked="" type="checkbox"/> RF Hangtime: 20 Net Hangtime: 20
P25 Mode:	<input type="checkbox"/> RF Hangtime: 20 Net Hangtime: 20
NXDN Mode:	<input type="checkbox"/> RF Hangtime: 20 Net Hangtime: 20
YSF2DMR:	<input type="checkbox"/>
MMDVM Display Type:	OLED Port: /dev/ttyAMA0 Nextion Layout: G4KLX

General Configuration

Setting	Value
Hostname:	pi-star Do not add suffixes such as .local
Node Callsign:	XXXXXX <i>Your radio must set the same call sign as here~!</i>
Radio Frequency:	431.075.000 MHz
Latitude:	50.000 degrees (positive value for North, negative for South)
Longitude:	0.000 degrees (positive value for East, negative for West)
Town:	Fuzhou city
Country:	CHINA
URL:	http://www.qrz.com/db/BG5ROJ <input checked="" type="radio"/> Auto <input type="radio"/> Manual
Radio/Modem Type:	STM32-DVM / MMDVM_HS - Raspberry Pi Hat (GPIO) <i>Choose this type!!!!</i>
Node Type:	<input type="radio"/> Private <input checked="" type="radio"/> Public
System Time Zone:	Asia/Shanghai
Dashboard Language:	english_uk

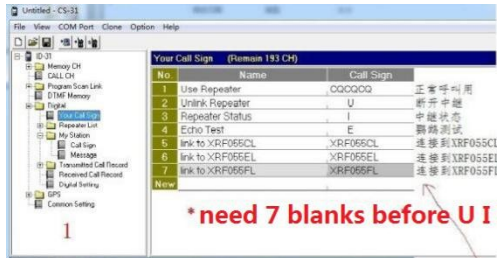
Yaesu System Fusion Configuration

Setting	Value
YSF Startup Host:	82442 - CN China #2 - W24269/TG46072 <i>Choose the host you like, Here is an example</i>
APRS Host:	england.aprs2.net

Firewall Configuration

Setting	Value
Dashboard Access:	<input type="radio"/> Private <input checked="" type="radio"/> Public
ircDDGGateway Remote:	<input checked="" type="radio"/> Private <input type="radio"/> Public

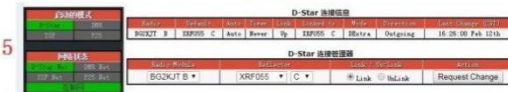
=====D-STAR Setting=====



* need 7 blanks before U I E



中继列表的名字
输入后, 会出现在对
应数字的后面



手台按住DR键, 进入中键模式
选中图示选项按ENT
键进入。

选中图示选项按ENT
使用中键选如图选项, 输入其
他控制指令对应的就可以。
具体功能参考左上角。



输入Name和Subname。输入CallSign两个项目时, **there must be 7 chars for call sign, if not, use blanks.**
6位呼号输入一个空格。输入热点对应频率。DUP选正负都可以, 注意偏移量是0。 USE选Yes。

一张图设置D-Star
手台上MMDVM热点
--By BG2KJT